



© Robert Besley

Well, who did you think built Stonehenge?
 English Heritage?
 Our thanks to Robert Besley and J Arthur Dixon for allowing us to
 publish this cartoon.



April 21st-23rd: 'Hadrian's Wall and the Romans'
 Teachers are warmly invited to an action-packed visit-planning
 weekend at Greenhead Youth Hostel. The hostel lies within
 minutes of The Wall and the programme includes expert
 speakers, guided visits to local sites and museums, a 'Roman
 Banquet' and a practical session on 'Roman' games and activities
 for school children. Cost £15; programme and application forms
 from: Border and Dales Area Office, YHA, Bowey House,
 William Street, Newcastle upon Tyne, NE3 1SA.

Training School in Archaeology

Wroxeter Roman City
 Saturday 19 August-Friday 1 September 1989.
 English Heritage and the School of Continuing Studies at the
 University of Birmingham have organised another training
 school in archaeological techniques at the Roman site of Wroxeter
 near Shrewsbury.

Applications from practising teachers will be welcomed as
 special sessions on the educational use of an excavation and the
 monument are planned.

For full details and an application form contact: Judith Burl,
 School of Continuing Studies, University of Birmingham, PO
 Box 36, Birmingham B15 2TT (021 414 5615).

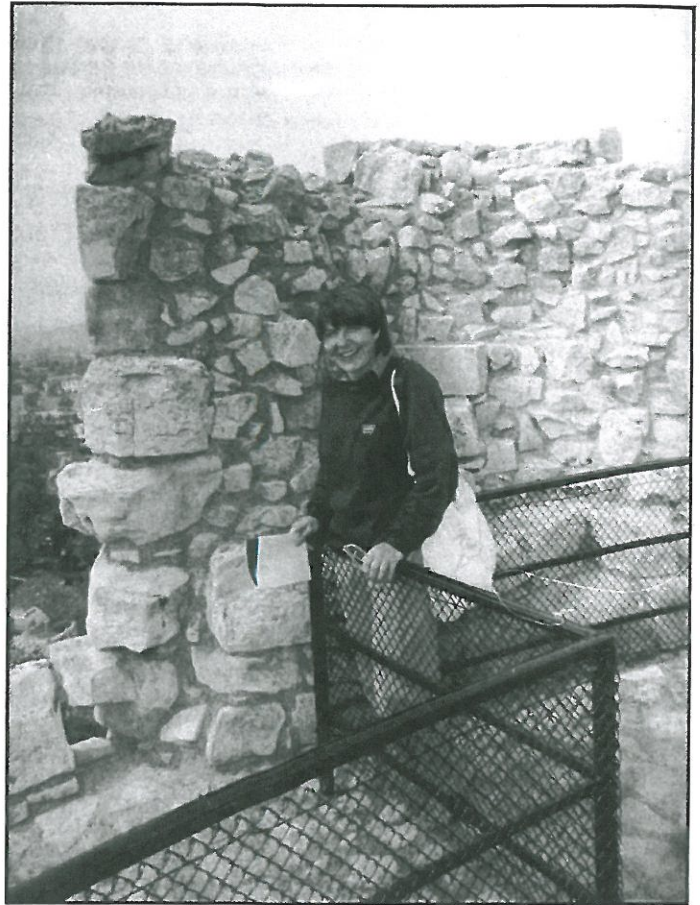
NEW VIDEO

Castles of Northumberland

The northernmost county of England had a turbulent time in the
 Middle Ages. Scottish invasions, rebel barons, border gangs and
 cattle raiders made castles a necessity. Northumberland has a
 great variety, ranging from motte and bailey to palace. This video
 is designed to be used in separate sections, each leading in to a
 study of a particular aspect of castles. 'Siting a castle' makes
 children relate the building to the landscape. 'Elements of a castle'
 examines features of the buildings such as mottes, walls, gateways
 and moats, referring to several examples. The third section takes
 the eye further in to look at particular walls in detail, identifying
 clues and encouraging pupils to play archaeological detective.
 Finally, 'A place to live in' sees the castles as houses. There are
 excellent aerial shots and teachers are encouraged to use the pause
 button to dwell on views normally impossible even on site. It lasts
 24 minutes but each section about 5. It will be useful in the 9-13
 age-range.

Jim Lang

English Heritage videos are on sale (£9.95 each) or may be loaned
 (free) from our Ruislip address. VHS or Betamax format.



Welcome...
 to our new Regional Education Officer, Elizabeth Hollinshead.
 Elizabeth will be the officer for our Midlands and East Anglia
 region and will doubtless get used to an area stretching from the
 borders of Wales to the East Anglian coast!
 Elizabeth joins our team from Doncaster Art Gallery and
 Museum where she was the Education Officer. Before that she
 worked in the Museum of East Anglian Life, Stowmarket after
 teaching in a comprehensive in Macclesfield, Cheshire.

English Heritage has over 350 monuments open to the
 public. Schools can make a free educational visit to any of
 our sites provided this is pre-booked through the relevant
 area office at least two weeks in advance. Teachers can
 also arrange a free exploratory visit beforehand to prepare
 ideas for the main visit later.

Please send your requests for further information about
 our Education Service to:

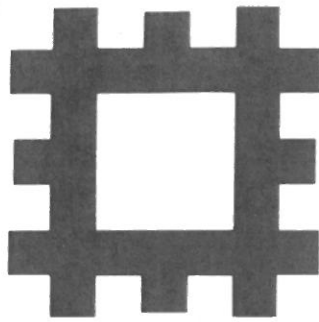
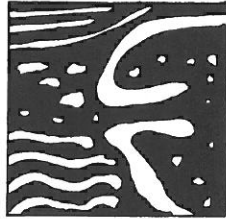
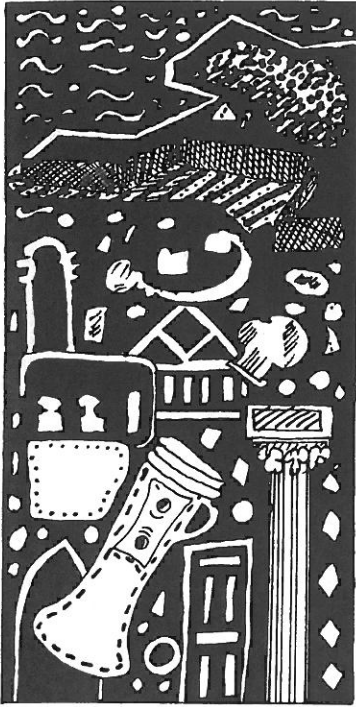
English Heritage Education Service
Keysign House
429 Oxford Street
London W1R 2HD
01-355-1303 Ext. 230

Please send any order for our publications or videos to:
English Heritage Store
PO Box 43, Ruislip, Middlesex HA4 0XW

REMNANTS, the Journal of the English Heritage Education Service, is edited by
 Mike Corbishley and Ken Glen.
 Text copyright is of individual contributors.
 Designed by Alan McPherson
 Typesetting by Citytype, Leicester
 Printed in England by Hythe Offset Ltd,
 ISSN 0269-9656
 © English Heritage 1989

English # Heritage

REMNANTS



Journal of the
English Heritage Education Service
No. 7 Spring 1989

Alice at Belsay

'Alice' at Belsay was a dramatic production performed at Belsay Hall in Northumberland for sixteen days in September, 1988. There were two directors, and responsibility for various aspects of the event, including finance and staffing, was shared jointly between Northumberland Education Authority and English Heritage. The brief to which the Directors had to work was:

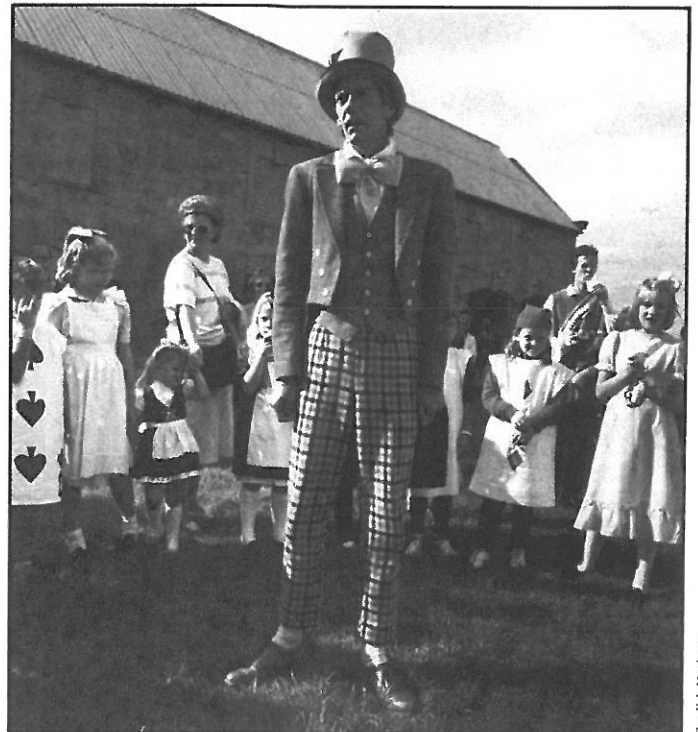
the whole site, consisting of a large hall (empty of furniture) and cellars, extensive gardens approximately half a mile in length and a ruined manor and castle with dog kennels and stables, was to be used.

the material and method of dramatic presentation was to be educational.

During the ten school days, school parties of children aged between 7 and 11 years would attend; during the three weekends the event would be open to the general public. On weekends any unsuspecting visitors who happen to have chosen that day for their visit to the Hall and Gardens would be free to wander at will.

The 'Alice' material was chosen as the basis for the work by English Heritage for very good reasons. The gardens at Belsay Hall are laid out in a way which divides them into very distinct sections, so that each episode of Alice's dream experience may easily be seen as occurring in one particular section; just as the gardens change, so the dramatic event changes.

The reader must imagine, therefore, a scenario in which the audience themselves become a kind of 'Alice', entering a dream world, and experiencing strange and often unexplained encounters with characters from the 'Alice' books. They are not merely watchers, but dreamers involved in the action of the dream.



English Heritage

In this article the Directors will describe and comment on the event, which was generally considered a great success in artistic and educational terms; they will point out some of the pitfalls awaiting those who attempt such projects and hopefully offer some guidelines for themselves and other Directors for the future.

INSIDE

NEW Information for Teachers PACK
Free visits for school groups